

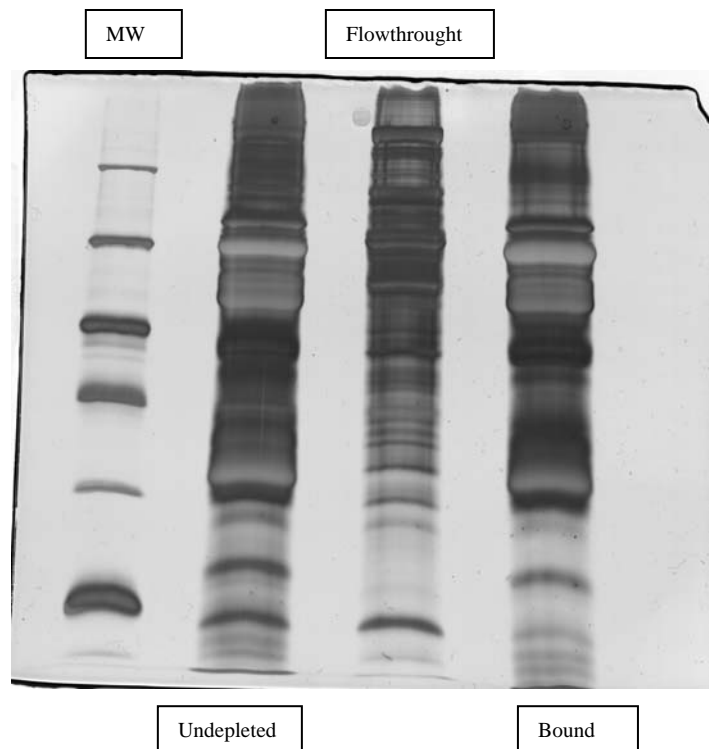
**Relative to 5-digit code: 24480**

**ABRF PRG 2009 Relative Protein Quantification in a Clinical Matrix Study**

We used a depletion column, Multy Affinity Removal Spin Cart from Agilent Technologies as a previous treatment to eliminate the six highest abundant proteins in the Clinical Matrix.

Is the first time we use a depletion column and for this reason we check the protocol with a 1D SDS PAGE gel.

We used a Hoefer mini VE Vertical electrophoresis system, with 10x10 cm glass plates. The concentration for resolution gel was 12.5% and we charged 50 micrograms in each lane.



Duplicate 1

Band Mw 114 kDa

Band Mw 30 kDa

Band Mw 15 kDa

Sample A



Duplicate 2

Band Mw 114 kDa

Band Mw 30 kDa

Band Mw 15 kDa

Sample B



Sample F



Duplicate 3

Band Mw 114 kDa

Band Mw 30 kDa

Band Mw 15 kDa

Sample D



Sample C

